

BUSINESS INTELLIGENCE FOR HP ALM AND QUALITY CENTER.

QUALITY INFORMATION AT YOUR FINGERTIPS



Assure TotalView for HP ALM & Quality Center

HP Software Gold Business Partner 

HP Software Interoperability 

Powered by **QlikView**

- A revolutionary new solution for HP ALM & QC analytics.
- A comprehensive Data Mart solution specifically designed for HP ALM & Quality Center
- Rapid deployment and immediate insight into your business data.
- Supplies Multi-Project Analytics, and supports HP ALM & QC User Defined fields, history data, trend analysis and much more.

The Challenge

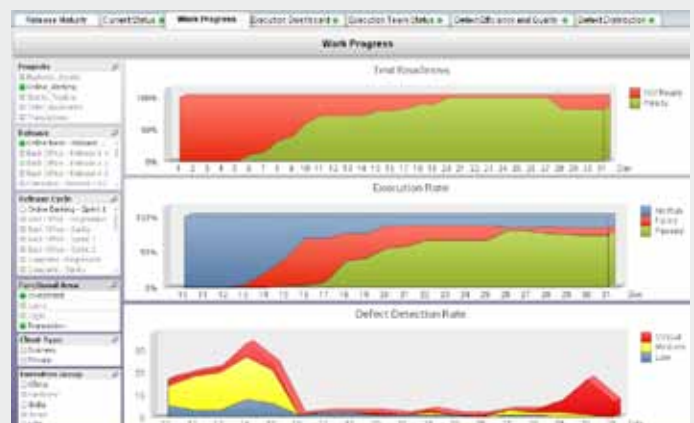
To access data that is stored in multiple databases of complex structure, each database representing a separate project. To provide user-friendly reporting that gives maximum results in minimum time. To supply managers and analysts with a comprehensive and reliable view of their ALM/Quality Center information

The Solution

TotalView is a purpose-built Business Intelligence solution with an emphasis on supplying a user friendly and easily accessible data source for ALM/QC reporting and analysis. TotalView supplies "Intelligent ALM/QC Reporting" for your business and empowers corporate decision makers. TotalView gives you Cross-Project reporting and trend analysis.

TotalView enables you to access QC data using any reporting or data analysis tool TotalView comes with a report library that brings you value from day one. TotalView is a true BI solution based on proven methodology.

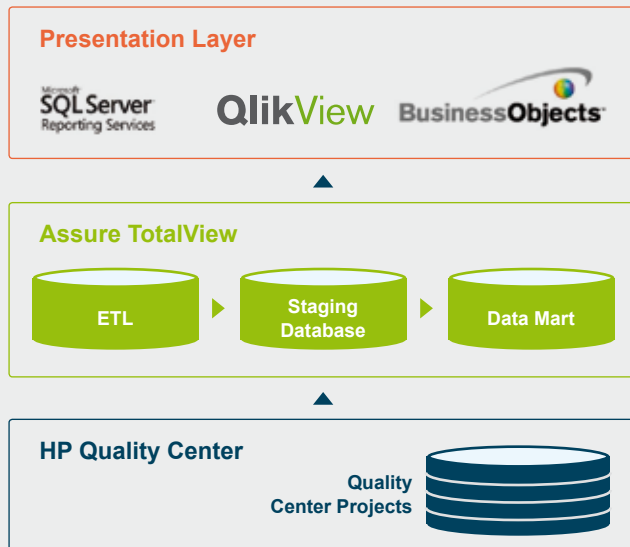
A Business Intelligent solution for ALM & QC



How it Works

Data is extracted from the ALM/QC project databases using ETL packages.

- The packages load the data into a staging environment where it is transformed into a reporting-friendly and intuitive structure.
- The data is then incrementally loaded into the Data Mart ready for reporting and analysis.
- A management console is supplied to self govern your environment.
- Any 3rd Party or customized presentation layer can have easy access to the data in the Data Mart.



Key Features:

Accurate and Trustworthy data

Assure TotalView will ensure that your ALM/QC reporting data is a reliable and accurate resource. Through giving you a complete picture of your data TotalView supplies you with security in your decision making.

Supported by Business Intelligence Best Practices

Assure TotalView is based on BI Best Practices:

- Optimized data extraction
- Dedicated reporting environment
- Simple creation of reports
- Intuitive and easily accessible data model
- A solution that empowers decision makers.

Multi-Project Analytics and Trend Analysis

Assure TotalView gives you the ability to easily analyze multiple QC projects by combining it in a single data source. The use of best practices in arranging the data guarantees in-depth trend and progress analysis.

Assure TotalView mitigates risk

Supports ALM/QC version changes
Minimal maintenance
Long term solution
Simple report build
Supported by BI professionals

Assure TotalView saves you money

Rapid time to production
Report building is efficient so as to support fast decision making
Better leverage your investment and reduce maintenance costs
Can be accessed by your current reporting tools
No need for a large team of in house BI Professionals

Assure TotalView is easy

Installation and setup is easy and fast
See results based on your ALM/QC data quickly
Management Console for easy configuration and maintenance

Assure TotalView Report Library

Assure TotalView includes a comprehensive collection of reports and dashboards implemented using QlikView. This library can be quickly incorporated in your business and is easily extended and customized.

QlikView

Assure has partnered with QlikTech to gear our customers with cutting-edge reporting technology.

Qlikview is the fastest growing business intelligence solution in the market.

QlikView is very different from traditional business intelligence software. It's simple and easy, and puts the business user in total control.

With just a few clicks, QlikView lets you consolidate, search, visualize, and analyze all your data sources for unprecedented business insight.

ABOUT ASSURE

Assure provides innovative products and solutions for HP Quality Center customers. Using our solutions companies can achieve a standardized and enhanced use of HP Quality Center while lowering the TCO. Our growing partner network enables us to offer our solutions globally.

ASSURE PRODUCTS FOR HP ALM & QC

- Úi[b&A Harmonizer
- Admin Console
- TrashBin
- Test Data Integrity
- OverDrive

- **TotalView**

CONTACT INFORMATION

For additional information, e-mail: sales@assure.net

Assure has offices in USA, Finland and Israel
www.assure.net